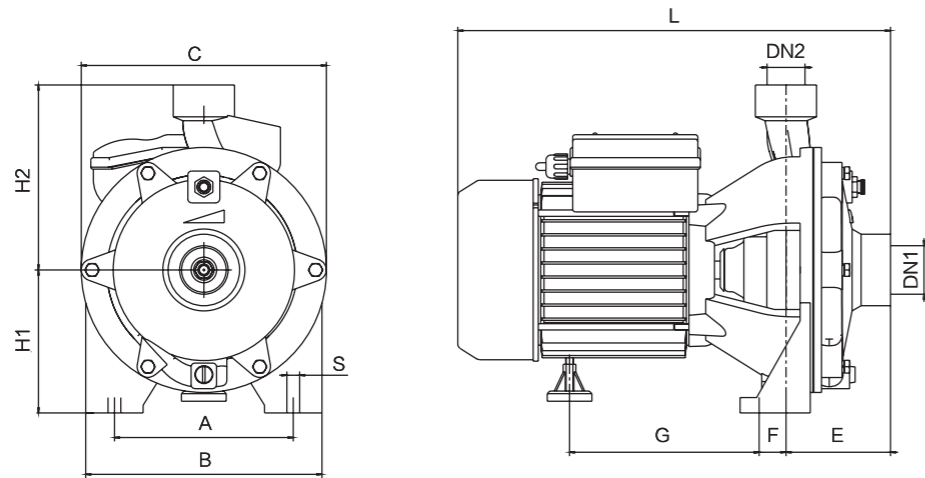


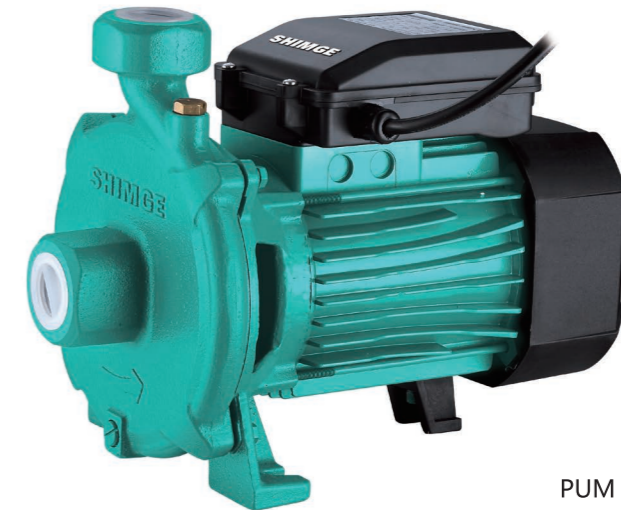
Dimensions & Weight



Model		DN1	DN2	Dim.(mm)										N.W. (kg)
Single-Phase	Three-Phase	(Inch)		A	B	C	E	F	G	L	S	H1	H2	
2SGPm25/130	2SGP25/130	1.25	1	140	185	192	82	21	148.5	339	10	112	145	15/14.5
2SGPm25/140	2SGP25/140	1.5	1	165	210	215	88	34	185	395.5	10	112	150	22/21
2SGPm25/160B	2SGP25/160B	1.5	1	165	210	215	88	34	185	395.5	10	112	150	25/24.5

Packing Size & Weight

Model		Dim.(L×W×H)	G.W.(kg)		20' Loading Qty. (pcs)
Single-Phase	Three-Phase	mm	Single-Phase	Three-Phase	
2SGPm25/130	2SGP25/130	385×235×280	18	17.5	1270
2SGPm25/140	2SGP25/140	445×255×300	24	24	885
2SGPm25/160B	2SGP25/160B	445×255×300	27	26.5	885



PUM

Model Instruction

PUM 200  
Type Range  
Centrifugal Pumps

Applications Fields

- ◉ Suitable for transferring water without abrasive particles or other liquid whose properties are similar to water.
- ◉ Widely used in solar boosting, water heater boosting, air energy boosting, various corollary equipment, etc.

Performance Range

- ◉ Max. Flow: 7.2m<sup>3</sup>/h
- ◉ Max. Head: 27m

Features

- ◉ Stainless steel impeller, shaft 304
- ◉ Specially designed for view of the hot water circulation
- ◉ High quality mechanical seal, NSK bearing, improve the reliability of the product

Application Limits

- ◉ Suction head up to 8m
- ◉ Liquid temperature up to +90°C
- ◉ Ambient temperature up to +40°C
- ◉ Max. Working pressure: 3bar
- ◉ Voltage fluctuation should not exceed 10% of rated value.
- ◉ pH: 6.5 to 8.5

Motor

- ◉ Single-Phase 220V/50Hz
- ◉ Motor: 2 pole asynchronous motor, copper wires, built-in thermal protector, fully closed fan cooling, continuous running
- ◉ Protection: IP44
- ◉ Insulation: F

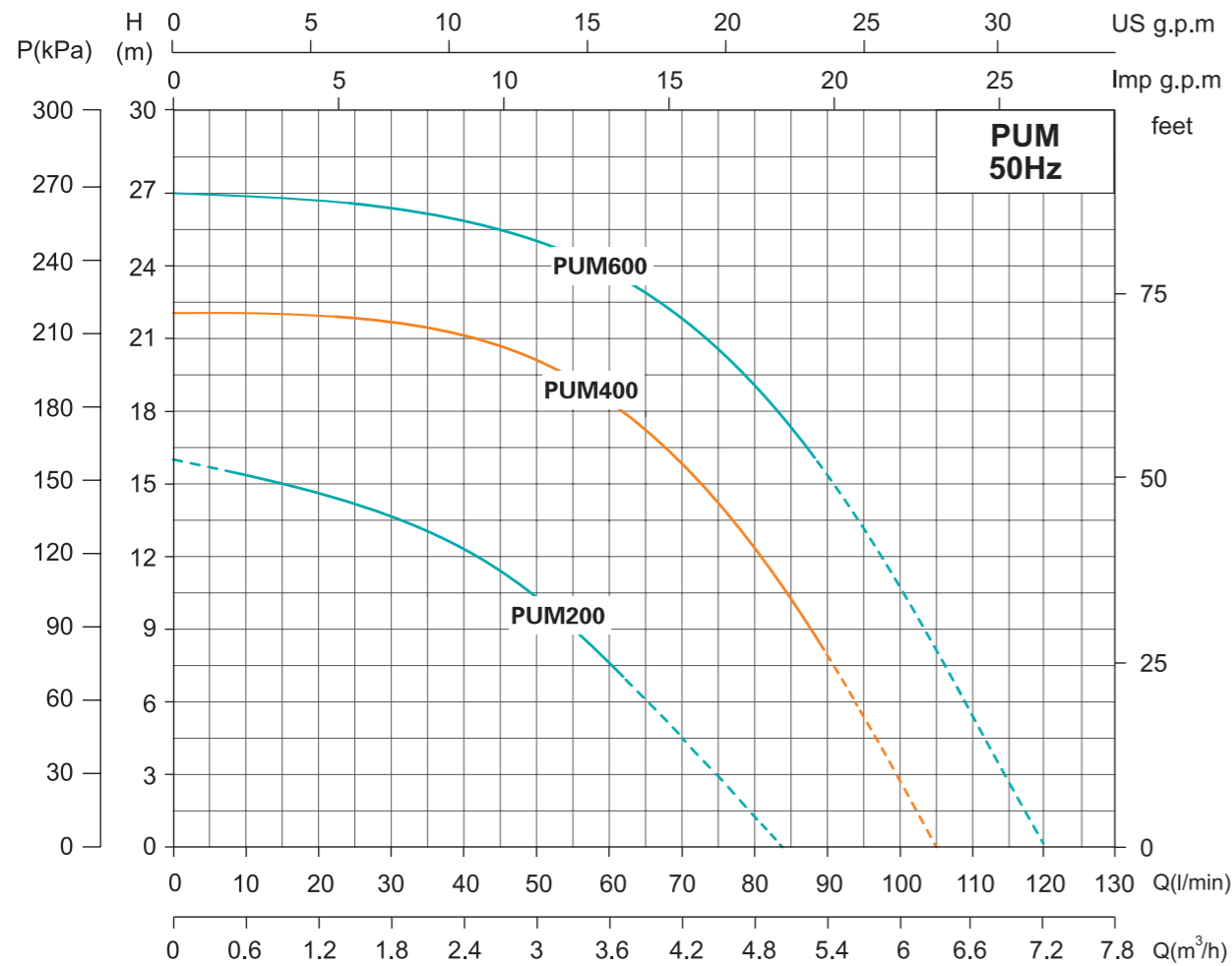
Certificate



Optional Available on Request

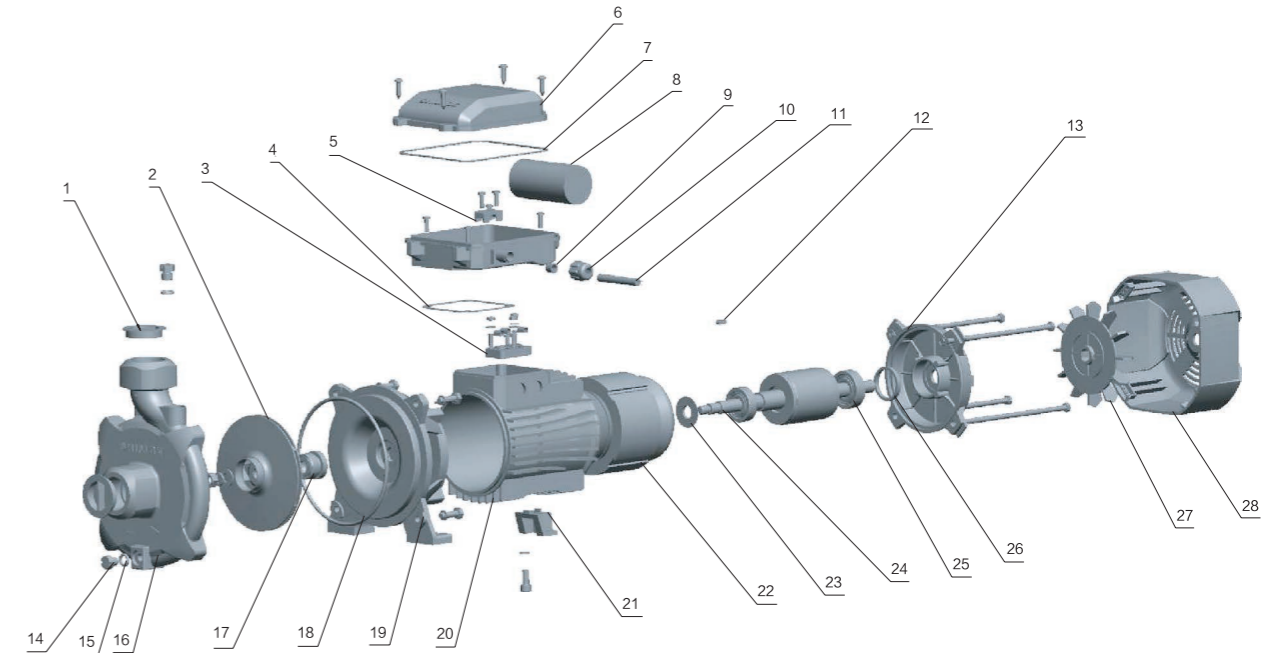
- (\* Standard configuration on Page 32)
- ◉ NSK bearing
- ◉ Motor whose insulation class is F
- ◉ Other voltage or frequency is 60Hz

Performance Curve



Model	Power		Max. Flow (m³/h)	Max. Head (m)	Head Range (m)	Max. Suction (m)
	kW	HP				
Single-Phase						
PUM200	0.25	0.34	5	15.5	7~15.5	8
PUM400	0.55	0.75	6.3	22	8~22	8
PUM600	0.75	1	7.2	27	16~27	8

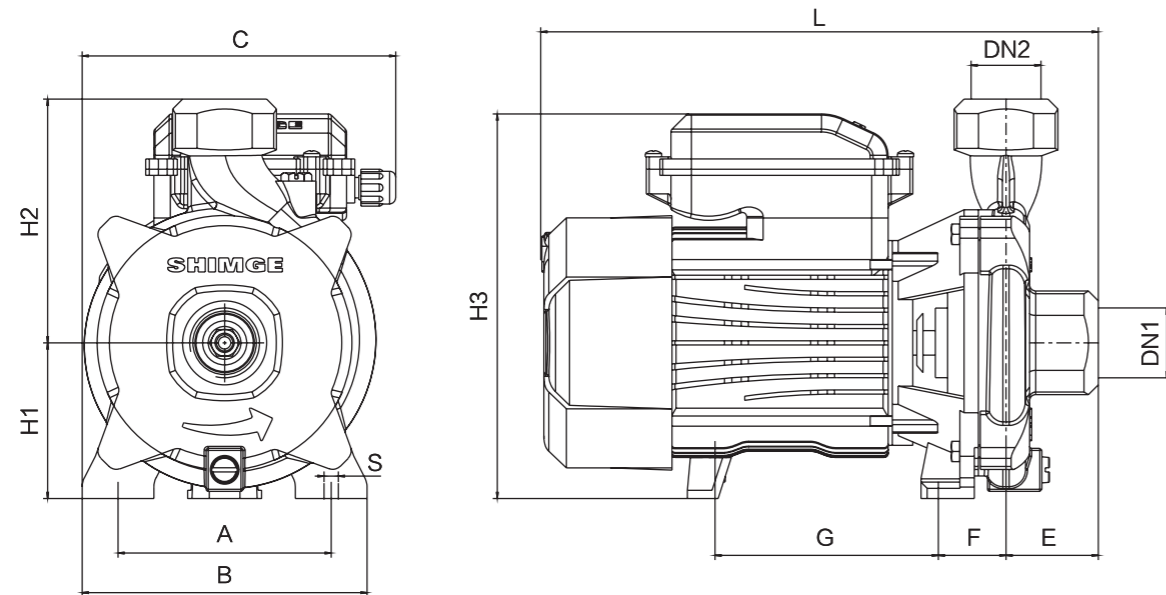
Components & Materials



No.	Component	No.	Component	No.	Component
1	Dust Cover	11	Cable	21	Foot
2	Impeller	12	Key	22	Stator Core Assembly
3	Terminal Board	13	End Shield	23	Water Deflector
4	Rubber Gasket	14	Screw	24	Rotor
5	The Cable Pressing Plate	15	O-ring	25	Bearing
6	Terminal Box Cover	16	Pump Body	26	Waved Spring
7	Rubber Gasket	17	Mechanical Seal	27	Fan
8	Capacitor	18	O-ring	28	Fan Cover
9	Cable Sleeve	19	Coupling		
10	Cable Locker	20	Motor Case		

NO.	Model	PUM200	PUM400	PUM600
8	Capacitor	10 μF/450V	18 μF/450V	20 μF/450V
25	End-cover Bearing	6201ZZ	6202ZZ	
	Coupling Bearing	6202ZZ	6203ZZ	
	Motor Shaft	304+Steel 45#		
17	Mechanical Seal	301-12/21 B:A (P)Stationary seal ring ø26	301-14/21 B:A (P)Stationary seal ring ø28	
		A:Graphite B: Ceramic P:NBR		
20	Motor Case	Aluminum		
19	Coupling	Cast Iron		
16	Pump Body	Cast Iron		
2	Impeller	AISI 304		

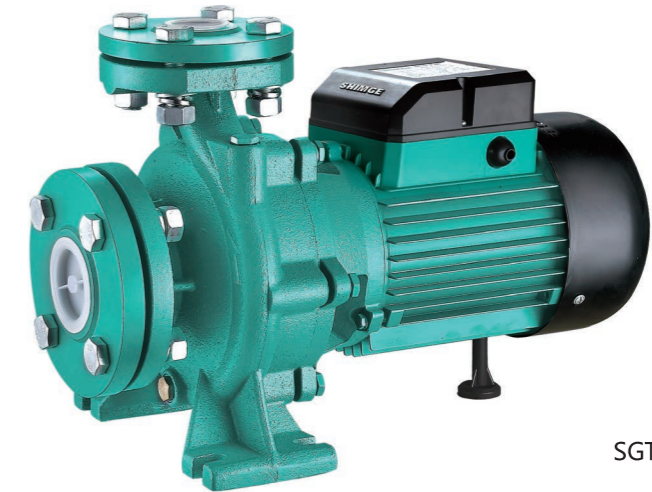
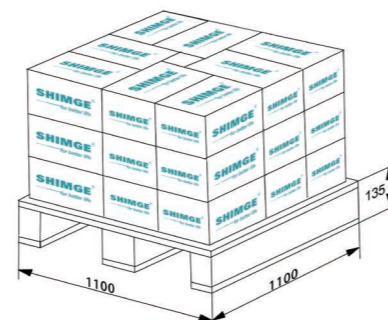
Dimensions & Weight



Model	DN1	DN2	Dim.(mm)										N.W. (kg)	
			(Inch)		A	B	C	E	F	G	L	S		H1
PUM200	1	1	104	139	153	45	33	109	272	7	76	119	188	7.5
PUM400	1	1	131	172	176	43	39.5	130	309	10	95	125	220	11.5
PUM600	1	1	131	172	177.5	53.5	39.5	130	320	10	98	135	223	13

Packing Size & Weight

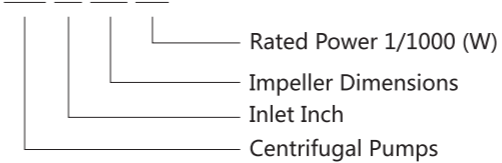
Model	Dim.(L×W×H)	G.W. (kg)	20'Loading Qty. (pcs)
PUM200	310×205×240	8	1881
PUM400	380×235×285	12	1232
PUM600	380×235×285	13.5	1232



SGT

Model Instruction

SGT 32-160/1.5



Applications Fields

- ◉ Suitable for transferring water without abrasive particles or other liquid whose properties are similar to water.
- ◉ Widely used in industrial and urban water supply, high-rise building boosting, fire protection system, breeding

Performance Range

- ◉ Max. Flow: 39m<sup>3</sup>/h
- ◉ Max. Head: 52m

Features

- ◉ Standard flange centrifugal pump
- ◉ Large flow, high efficiency

Application Limits

- ◉ Suction head up to 8m
- ◉ Liquid temperature up to +60°C
- ◉ Ambient temperature up to +40°C
- ◉ Max. Working pressure: 6bar
- ◉ Voltage fluctuation should not exceed 10% of rated value.
- ◉ pH: 6.5 to 8.5

Motor

- ◉ Three-Phase 380V/50Hz
- ◉ Motor: 2 pole asynchronous motor, copper wires, built-in thermal protector, fully closed fan cooling, continuous running
- ◉ Protection: IP44
- ◉ Insulation: Class B

Certificate



Optional Available on Request

- (\* Standard configuration on Page 36)
- ◉ Motor whose insulation class is F
- ◉ NSK bearing