

JET-G2

Performance Range

Max. Flow: 5.4m³/h
Max. Head: 48m

Certificate



Application Limits

- ⊙ Suction head up to 9m
- ⊙ Liquid temperature up to +40°C
- ⊙ Ambient temperature up to +40°C
- ⊙ Max. Working pressure: 4.8bar
- ⊙ Voltage fluctuation should not exceed 10% of rated value.
- ⊙ pH: 6.5 to 8.5

Basic Configuration

- ⊙ Mechanical sealing: ceramic / graphite / NBR rubber
- ⊙ Motor: two asynchronous motors, copper coils, built-in thermal protection, all closed fan-cooled, continuous operation
- ⊙ Protection: IP44
- ⊙ Insulation class: B

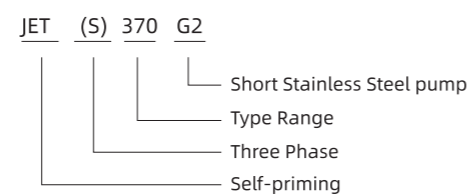
Application Fields

- ⊙ Suitable for transferring water without abrasive particles or other liquid whose properties are similar to water.
- ⊙ Widely used in garden irrigation, vegetable greenhouse water supply, breeding industry water supply and drainage, various corollary equipment, etc.

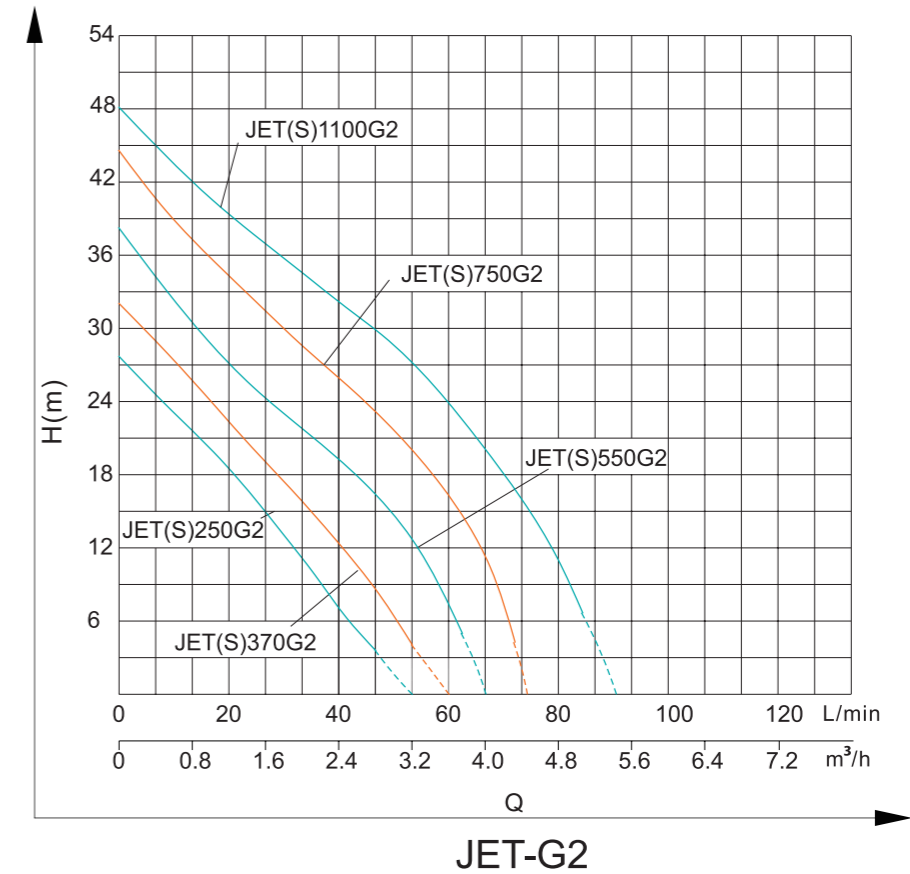
Optional Available On Request

- ⊙ NSK bearing
- ⊙ Motor whose insulation class is F

Model Instruction

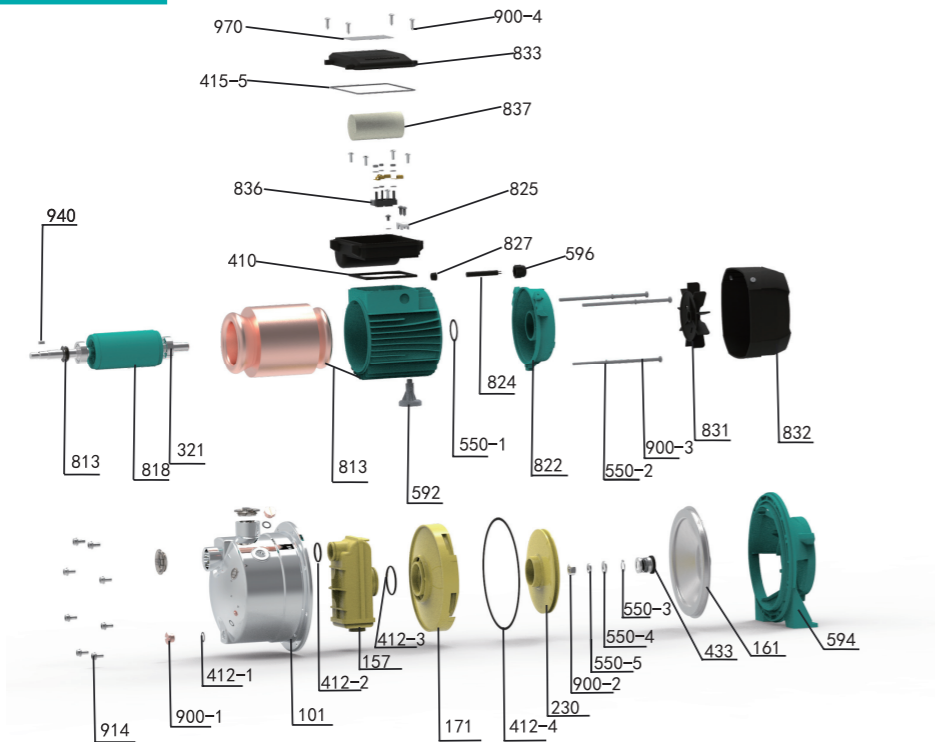


Performance Curve



Model	Power		Max. Flow (m ³ /h)	Max. Head (m)	Head Range (m)	Max. Suction (m)
	Single-Phase kW	HP				
JET (S) 250G2	0.25	0.34	2.7	28	4~28	8
JET (S) 370G2	0.37	0.5	2.8	32	5~32	7
JET (S) 550G2	0.55	0.75	3.5	38	4~38	9
JET (S) 750G2	0.75	1	3.5	44	5.5~44	9
JET (S) 1100G2	1.1	1.5	4.2	48	9~48	9

Components & Materials

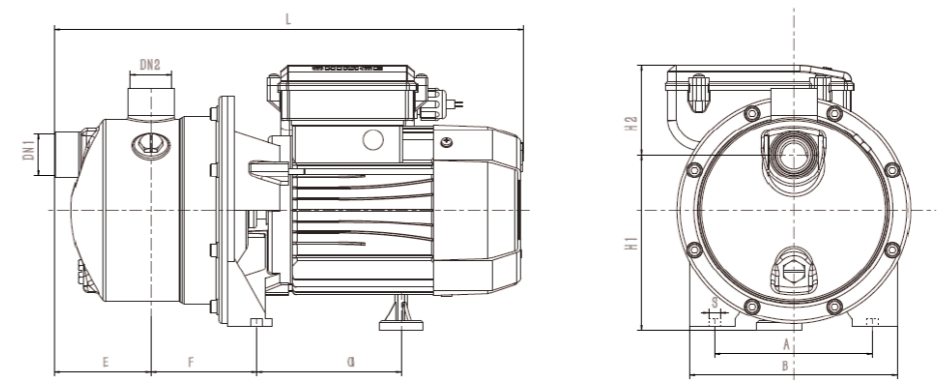


No.	Part name	No.	Part name	No.	Part name
914	Hexagonal head screw	433	Mechanical seal	321	Deep groove ball bearing
900-1	Vent cock	161	Pump cover	833	Junction box assembly
412-1	O-ring seal	594	Coupling	818	Rotor
101	Pump body (matte)	832	Fan cover	940	Flat key joint
412-2	O-ring seal	831	Fan	410	Rubber washer
157	Injector	900-3	Type I hexagonal bolt	836	Binding post
412-3	O-ring seal	550-2	Spring washer	412-5	O-ring seal
171	Guide vane	822	Rear end cover	970	Nameplate
412-4	O-ring seal	596	Cable lock	900-4	Cross recessed pan head tapping screw
230	Impeller	824	Cable	837	Capacitor
900-2	Type I hexagonal nut	550-1	Wave spring	825	Cable pressing plate
550-5	Spring washer	827	Cable sheath		
550-4	Flat washer	592	Foot		
550-3	Elastic collar for shaft	813	Stator		

Model	JET250G2	JET370G2	JET550G2	JET750G2	JET1100G2	JETS250G2	JETS370G2	JETS550G2	JETS750G2	JETS1100G2
Capacitor(μF)	AC12μF\450V			AC18μF\450V	AC25μF\450V	/	/	/	/	/
Bearing	6201-2RZ	6201-2RZ	6202-2RZ	6202-2RZ	6202-2RZ	6201-2RZ	6201-2RZ	6202-2RZ	6202-2RZ	6202-2RZ
Motor Shaft	304+45#	304+45#	304+45#	304+45#	304+45#	304+45#	304+45#	304+45#	304+45#	304+45#
Mechanical Seal	108-12/21&S:A(RC)		108-14/25&S:A(PC)			108-12/21&S:A(RC)		108-14/25&S:A(PC)		
Motor Case	YL102	YL102	YL102	YL102	YL102	YL102	YL102	YL102	YL102	YL102
Coupling	YL102	YL102	YL102	YL102	YL102	YL102	YL102	YL102	YL102	YL102
Pump Body	304	304	304	304	304	304	304	304	304	304
Impeller	PPO	PPO	PPO	PPO	PPO	PPO	PPO	PPO	PPO	PPO

Dimensions & Weight

Model	DN1	DN2	Dim.(mm)								N.W.(kg)	
			Single-Phase		A	B	E	F	G	L		S
JET250G2	1"	1"	105	145	70	79	109	333.5	9.5	120	64.5	6.1
JET370G2	1"	1"	105	145	70	79	109	333.5	9.5	120	64.5	6.6
JET550G2	1"	1"	125	165	76.5	83.5	114.5	371	9.5	143	73	8.8
JET750G2	1"	1"	125	165	76.5	83.5	114.5	371	9.5	143	73	10.2
JET1100G2	1"	1"	145	183	76	97	109.5	379	9.5	153	68	12
JETS250G2	1"	1"	105	145	70	79	109	333.5	9.5	120	59.5	5.6
JETS370G2	1"	1"	105	145	70	79	109	333.5	9.5	120	59.5	6.1
JETS550G2	1"	1"	125	165	76.5	83.5	114.5	371	9.5	143	59.5	8.5
JETS750G2	1"	1"	125	165	76.5	83.5	114.5	371	9.5	143	59.5	9.8
JETS1100G2	1"	1"	145	183	76	97	109.5	379	9.5	153	54.5	11.5



Packing Size & Weight

Model	Dim.(L×W×H) mm	G.W.(kg)	20'Loading Qty.(pcs)
JET250G2	370*210*225	6.1	1628
JET370G2	370*210*225	6.6	1628
JET550G2	410*230*265	8.8	1140
JET750G2	410*230*265	10.2	1140
JET1100G2	410*245*275	12	1017
JETS250G2	370*210*225	5.6	1628
JETS370G2	370*210*225	6.1	1628
JETS550G2	410*230*265	8.5	1140
JETS750G2	410*230*265	9.8	1140
JETS1100G2	410*245*275	11.5	1017